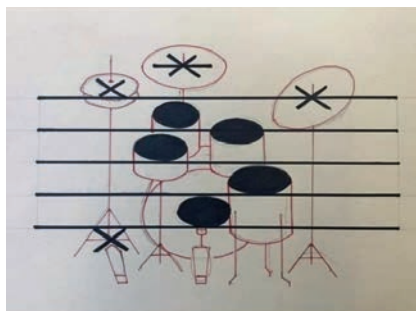


DRUMS EKS

NOTE/REST VALUES

British name	American name	Note value	Rest	Number of beats
Semibreve	Whole note	♩	♩	4 beats (or whole bar)
Minim	Half note	♪	♪	2 beats
Crotchet	Quarter note	♩	♩	1 beat
Quaver	Eighth note	♪	♪	1/2 beat
Semiquaver	Sixteenth note	♩	♩	1/4 beat
Demisemiquaver	Thirty-second note	♩	♩	1/8 beat
Hemidemisemiquaver	Sixty-fourth note	♩	♩	1/16 beat

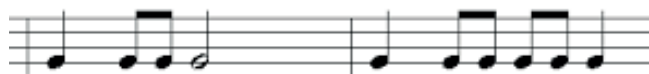


(if no + or o over high hat, assume closed)

High Hat Open ○ + High Hat Closed

Tom 1 Tom 2 Cross-Stick (rim click) Ride Crash

Bass Snare Floor Tom Rim Shot High Hat Foot



1 2 & 3 4 1 2 & 3 & 4



GUITAR/BASS EKS

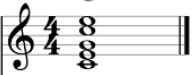
NOTE/REST VALUES



1 2 & 3 4 1 2 & 3 & 4

CHORD READING

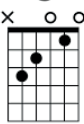
C



TAB

0
1
0
2
3

C




3 2 1

SCHOOL ROCK

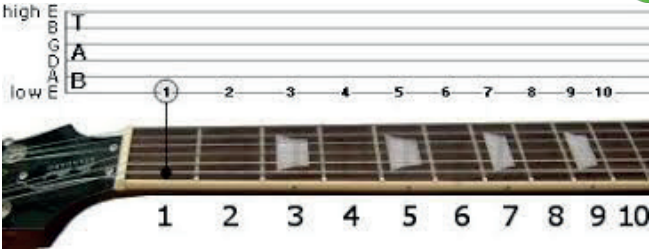
Reading Guitar Tabs

Guitar tabs are read as though you're looking down at your guitar while playing.

- Vertical lines represent each note in sequential order.
- Horizontal lines represent the string you pick.
- Numbers represent the fret you're playing on.



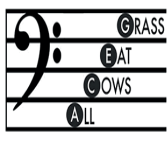
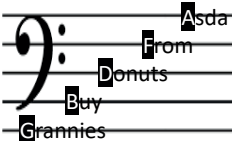
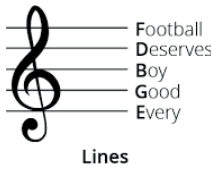
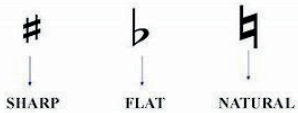
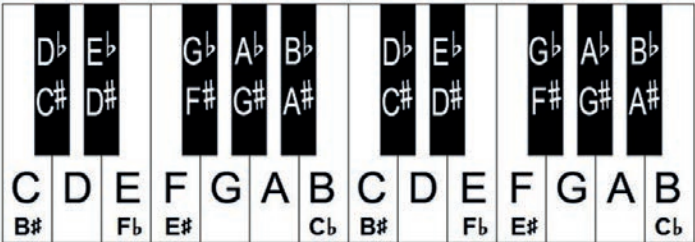
▶ SCAN ME



PIANO/VOCALS EKS



NOTE/REST VALUES



Piano



Vocals

