

Staffing Structure

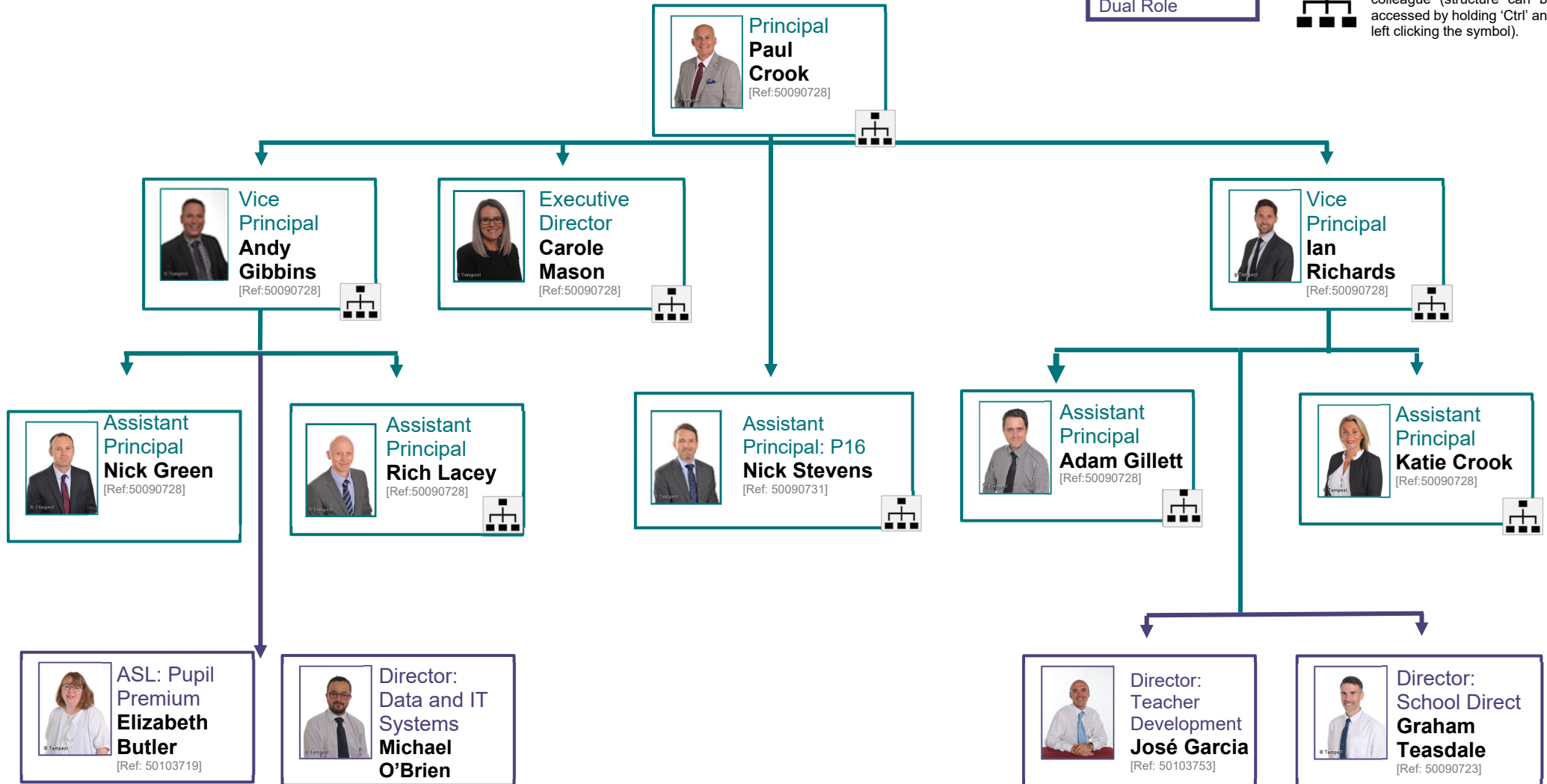
Senior Leadership Team

Version Date: Sept 2022

| Colour-Coding |
|-----------------|
| Senior Leader |
| Middle Leader |
| Teacher |
| Associate Staff |
| Dual Role |

| Definitions |
|------------------------------|
| ASL: Associate Senior Leader |
| CAL: Curriculum Area Leader |
| PA: Personal Assistant |

Symbol indicates that there is a structure linked to this colleague (structure can be accessed by holding 'Ctrl' and left clicking the symbol).



Never Stop Flying

Achieving Excellence through a Values Driven Education

School Improvement Priorities 2022-23 – SLT Portfolios

Ian Richards

Quality of Education

Leadership LM

Assistant Principals for Personal Development; Behaviour, Attitudes & Safeguarding, Directors of TD and Leads for Academic Vocabulary

Dept LM

History, Geography, Languages & Computing

Leadership Responsibilities

Teaching, Learning & Assessment, Quality Assurance, CPD, CSL Meetings, Home Learning, T&L Coaches, Closing the Gap Strategy

Andy Gibbins

Raising Achievement

Leadership LM

Assistant Principals for Raising Achievement & GCSE Strategy; Curriculum & Systems, Director of IT & Data Development

Dept LM

English, Maths & Science

Leadership Responsibilities

Data, Assessment & Progress, Reporting & Exams, Closing the Gap Strategy, Disadvantaged Strategy, RAP Meetings

School Improvement Priorities 2022-23 – SLT Portfolios

Carole Mason

Strategic Budget, Operations & Staff Wellbeing

Line Management

Human Resources, Finance, Catering, Extended Services, Front Officer

Leadership Responsibilities

Strategic Budget, Recruitment, Stakeholder Voice, Compliance/Policies, Website, Brand, Marketing & Communication Strategy, Health & Safety, Associate Staff Appraisal/Induction

School Improvement Priorities 2022-23 – SLT Portfolios

Nick Stevens

Post-16 Strategy & Outcomes

Dept LM

Post-16 Leaders for Core Subjects, Social Sciences. Post-16 Leaders

Leadership Responsibility

Quality of Education in Post-16, Post-16 Ethos, RAP Meetings, Mentor Time & Enrichment, Standards, Routines & Attendance, Recruitment, Retention & Destinations, Post-16 Leadership & Student Voice, Post-16 Personal Development & Student Voice

Nick Green

Raising Achievement

Dept LM

Art, Technology, Achievement Leaders (Y7-11) & Careers

Leadership Responsibilities

GCSE Strategy, Careers Strategy, RAP Meetings, Year Group Ethos, Student Exam Preparation, KS3 Assessment Strategy

School Improvement Priorities 2022-23 – SLT Portfolios

Katie Crook

Behaviour, Attitudes & Safeguarding

Dept LM

HeartSpace, SENDCO, Head of Pastoral Care & Behaviour Support

Leadership Responsibilities

Safeguarding (DSL), Strategic Development of HeartSpace, Values Driven Expectations, Special Educational Needs, Looked After Children Lead, Primary Links including Transition Lead, KS2 > 3 moderation, Whole School Thrive Approach

Adam Gillett

Personal Development

Dept LM

RCS, Head of Attendance, School Counsellor, Heads of House

Leadership Responsibilities

Personal Development, House System & Ethos, Mentor Time & Assemblies, Student Voice, Strategic Attendance, Positive Mental Health Champion, Charity, Student Leadership & Ambassadors, Rewards Strategy, Equality & Diversity, Enrichment & external speakers

School Improvement Priorities 2022-23 – SLT Portfolios

Rich Lacey

Curriculum & Systems

Dept LM

PE, Business Studies, Visual
Performing Arts and Cover Co-
ordinator

Leadership Responsibility

Strategic Development of Bromcom,
Strategic Curriculum Modelling,
Timetabling, Options Process,
Teaching Staff Appraisals, Quality of
cover and supply, Trips & Visit Lead.